

ACTIVA Rooftop

ARC-ARG-ARH-ARD

A complete range from 17 kW up to 40 kW

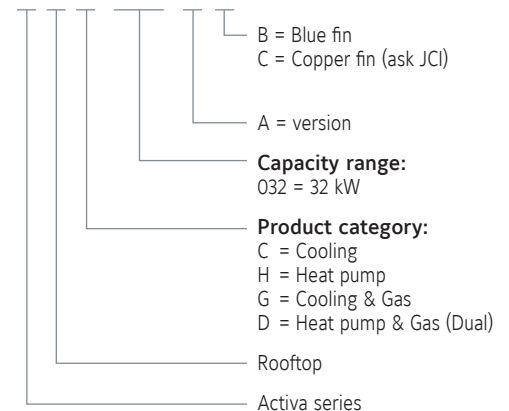


YKN2open

Features

- High efficiency EER and COP
- Low noise level
- EC supply fan
- All configurations: Cooling only, Cooling + gas, Heating, Heating + Gas
- BMS connection as standard (N2Open protocol)
- Compact design
- Energy recovery (enthalpy wheel)
- External HP & LP access
- Filters G4, F6 & F7 available

A R C 032 A B Nomenclature





ACTIVA Rooftop

ARC-ARG-ARH-ARD 017 to 040 AB/BB

Technical features

Cooling only models		ARC 017 AB	ARC 022 AB	ARC 032 AB	ARC 040 AB	
Net cooling capacities	kW	18.2	22.2	31	39.9	
Power input	kW	5.5	7.4	9.9	14.2	
SEER		3.82	3.85	4.06	3.28	
η _{s,c}		149.6	151.1	159.4	128.1	
Working range (full load / partial load)	°C	7°C ~ 46°C / -10°C ~ 52°C				
Heat pump models		ARH 017 BB	ARH 022 BB	ARH 032 AB	-	
Net cooling capacities	kW	18.2	24	31	-	
Power input in cooling	kW	5.5	7.4	9.9	-	
Heating capacities (1)	kW	17.2	23.5	30.9	-	
Power input in heating	kW	4.5	5.7	9.8	-	
SCOP		2.96	2.96	2.96	-	
η _{s,h}		115.2	115.2	115.3	-	
Working range (full load / partial load)	°C	-10°C ~ 46°C / -10°C ~ 52°C				
Cooling only + Gas heating models		ARG 017 AB	ARG 022 AB	ARG 032 AB	ARG 040 AB	
Net cooling capacities	kW	18.2	22.2	31	39.9	
Cooling power input	kW	5.5	7.4	9.9	14.2	
Standard Heating capacities (1) NET	kW	23	23	41	41	
Natural gas 2ND-H, G20	m³/h	2.5	2.5	4.5	4.5	
Working range (full load / partial load)	°C	-15°C ~ 46°C / -15°C ~ 52°C				
Heat pump + Gas heating models		ARD 017 BB	ARD 022 BB	ARD 032 AB	-	
Net cooling capacities	kW	18.2	24	31	-	
Power input in cooling	kW	5.5	7.4	9.9	-	
Heating capacities (1)	kW	17.2	23.5	30.9	-	
Power input in heating	kW	4.5	5.7	9.8	-	
Standard Heating capacities (1) NET	kW	23	23	41	-	
Natural gas 2ND-H, G20	m³/h	2.5	2.5	4.5	-	
Working range (full load / partial load)	°C	-15°C ~ 46°C / -15°C ~ 52°C				
Common characteristics						
Power supply	400V/3 + N/ 50Hz					
Main switch	A	20	25	40	50	
Main cable	Nbr. x mm²	5 x 4	5 x 6	5 x 10	5 x 16	
Cable to thermostat	Nbr. x mm²	10 x 0.22				
Number of circuits / Compressor type	1 / 1 x Scroll			1 (Tandem) / 2 x Scroll		
Evaporator fan at nominal airflow	Airflow	m³/h	3400	4300	5700	7400
	ASP	Pa	600	600	600	600
Nett dimensions	Height	mm	1 420	1 420	1 420	1 420
	Length	mm	1 866	1 866	2 135	2 135
	Depth	mm	1 540	1 540	1 850	1 850
Nett weight	ARC / ARG	kg	420 / 462	440 / 482	581 / 642	585 / 646
Nett weight	ARH / ARD	kg	425 / 467	445 / 487	587 / 648	-

All the data are at EUROVENT conditions with 400V/3+N/50Hz.

Cooling : Entering indoor coil temp. 27°C / 19°C WB and outdoor temperature 35°C - Heating : Entering indoor coil temp. 20°C and outdoor temperature 7°C / 6°C WB

(1) Add indoor fan motor consumption to know total heating capacity.

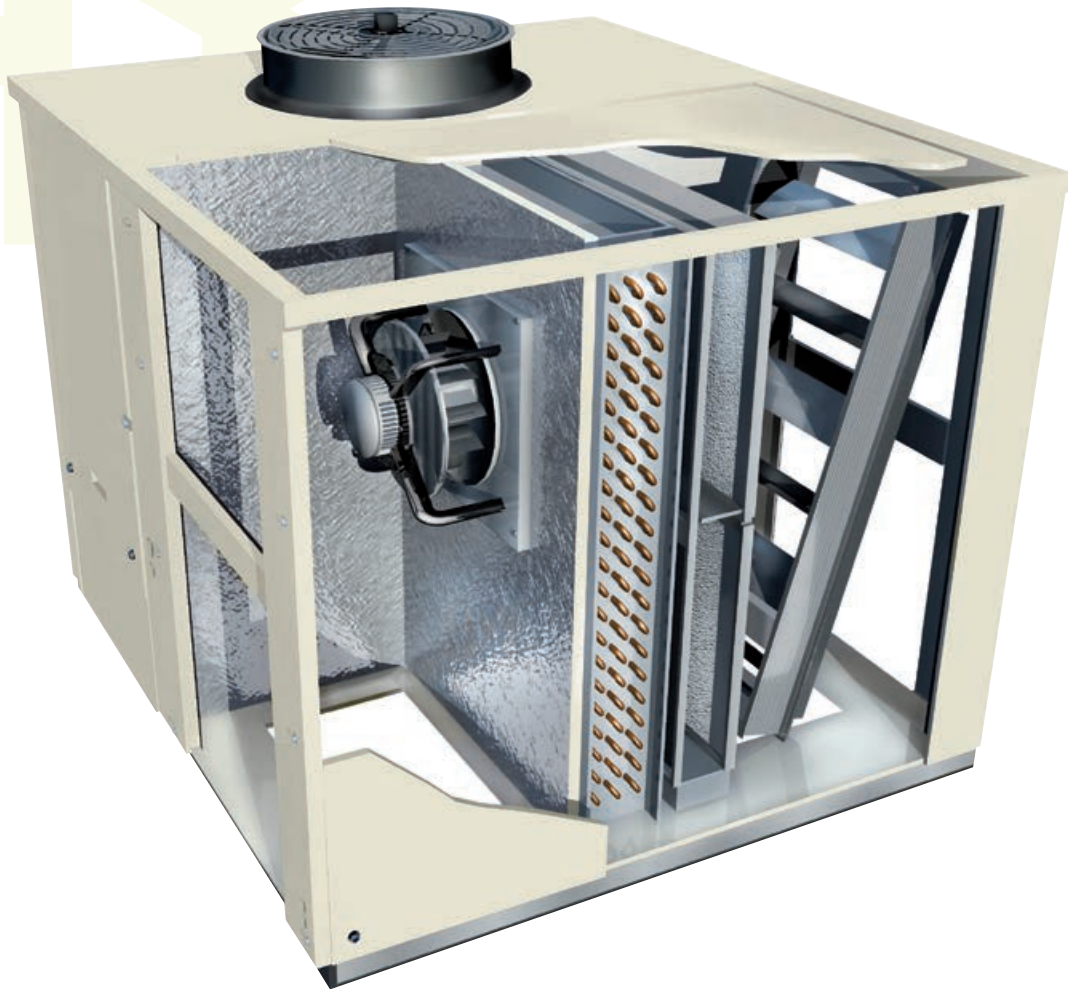
Codes

Cooling only models	ARC 017 AB	ARC 022 AB	ARC 032 AB	ARC 040 AB
	S661752110	S661752120	S661752130	S661752150
Heat pump models	ARH 017 BB	ARH 022 BB	ARH 032 AB	-
	S661752513	S661752127	S661752133	-
Cooling only + Gas heating models	ARG 017 AB	ARG 022 AB	ARG 032 AB	ARG 040 AB
	S661752111	S661752121	S661752131	S661752151
Heat pump + Gas heating models	ARD 017 BB	ARD 022 BB	ARD 032 AB	-
	S661752118	S661752128	S661752132	-
Thermostat	to be ordered separately			
	DPC-1			



Manufacturer reserves the rights to change specifications without prior notice.

Activa rooftop details & features



High Efficiency

High efficiency compressor and fans managed by a smart control allows the unit to achieve and maintain the level of comfort required in the most efficient way, reducing therefore the energy bill.



Low Noise

Ultra quiet fans and optimized airflow reduces the noise level increasing the comfort. Compressors are mounted on shock absorbers and anti-vibration springs are available to avoid vibration transmissions into de building.



Easy Installation and Maintenance

The high level of usability of the control, the internal solutions adopted (like direct driven fans with variable speed) and the easy access to components simplify and reduce the need of external interventions. Full information on commissioning and maintenance plan are provided to help to ensure unit keeps running always in optimal conditions.



Compact Design

The refrigerant circuit layout has been redesigned and high efficiency exchangers been used to reduce the footprint and improve the transport and handling. Transition roofcurbs are available to fit in existing installations.

Accessories & options

	Code	Cooling only				Heat pump			Cooling + gas heating				Heat pump + gas heating		
		017	022	032	040	017	022	032	017	022	032	040	017	022	032
Thermostat DPC-1	S603786044	A	A	A	A	A	A	A	A	A	A	A	A	A	A
YNK2Open Gateway BACnet / IP - JCI Metasys N2	S606791244	A	A	A	A	A	A	A	A	A	A	A	A	A	A
YNK2Open Gateway Modbus TCP / IP - JCI Metasys N2	S606791245	A	A	A	A	A	A	A	A	A	A	A	A	A	A
Dry bulb triple input economizer or motorized air damper with rain hood	S611752301	O	O			O	O		O	O			O	O	
	S611752311			O	O			O			O	O			O
Enthalpy probes	S613990081	O	O	O	O	O	O	O	O	O	O	O	O	O	O
Indoor air quality sensor	S606819964	O/A	O/A	O/A	O/A	O/A	O/A	O/A	O/A	O/A	O/A	O/A	O/A	O/A	O/A
Power Exhaust	S611752302	A	A			A	A		A	A			A	A	
	S611752312			A	A			A			A	A			A
Barometric relief damper and rain hood	S611752472	A	A			A	A		A	A			A	A	
	S611752473			A	A			A			A	A			A
Fresh air damper and rain hood (2)	S611752303	A	A			A	A		A	A			A	A	
	S611752313			A	A			A			A	A			A
Low ambient kit	S611752381	O	O	O	O	O	O	O	O	O	O	O	O	O	O
Roofcurb adapter (3)	S611752886	A	A			A	A		A	A			A	A	
	S611752887			A	A			A			A	A			A
Fixed roof curb	S611752881	A	A			A	A		A	A			A	A	
	S611752882			A	A			A			A	A			A
Adjustable roof curb	S611752883	A	A			A	A		A	A			A	A	
	S611752884			A	A			A			A	A			A
Dirty filter switch	S613990085	O	O	O	O	O	O	O	O	O	O	O	O	O	O
Smoke detector	S613995382	O	O	O	O	O	O	O	O	O	O	O	O	O	O
Fire detection thermostat	S613903003	O	O	O	O	O	O	O	O	O	O	O	O	O	O
Hot water coil	S611752351	O	O			O	O								
	S611752352			O	O			O							
Electric heaters	16 kW	S611752516	O	O			O	O							
	16 kW	S611752616			O	O			O						
	25 kW	S611752525	O	O			O	O							
	25 kW	S611752625			O	O			O						
	37 kW	S611752537			O	O			O						
Propane conversion Kit	S611752780								A	A	A	A	A	A	A
Filter kit F6	S611752401	O	O			O	O		O	O			O	O	
	S611752402			O	O			O			O	O			O
Filter kit F7	S611752411	O	O			O	O		O	O			O	O	
	S611752412			O	O			O			O	O			O
Grill condenser coil protection	S611752451	O	O			O	O		O	O			O	O	
	S611752452			O	O			O			O	O			O
Antivibration mounting kit	S611752461	A	A	A	A	A	A	A	A	A	A	A	A	A	A
Energy recovery	S611752501	A	A			A	A		A	A			A	A	
	S611752511			A	A			A			A	A			A
Filter kit F6 for energy recovery	S611755506	O	O			O	O		O	O			O	O	
	S611755516			O	O			O			O	O			O
Filter kit F7 for energy recovery	S611752507	O	O			O	O		O	O			O	O	
	S611752517			O	O			O			O	O			O
Alarm relay board	S606791243	O/A	O/A	O/A	O/A	O/A	O/A	O/A	O/A	O/A	O/A	O/A	O/A	O/A	O/A
Copper-copper coil	Contact us	O	O	O	O	O	O	O	O	O	O	O	O	O	O

O=Option (factory fitted). A=Accessory (supplied loose). O/A=If you want this item factory fitted, precise it in the order form.
 (1) Energy recovery accessory includes: economizer, rain hood, indoor air quality sensor and G4 filters.
 (2) Fresh air damper can not be installed if economizer or motorized damper is fitted.
 (3) Transition roofcurbs to fit in D_IC/D_IG/B_IG existing installations (090-150 kbtu/h).