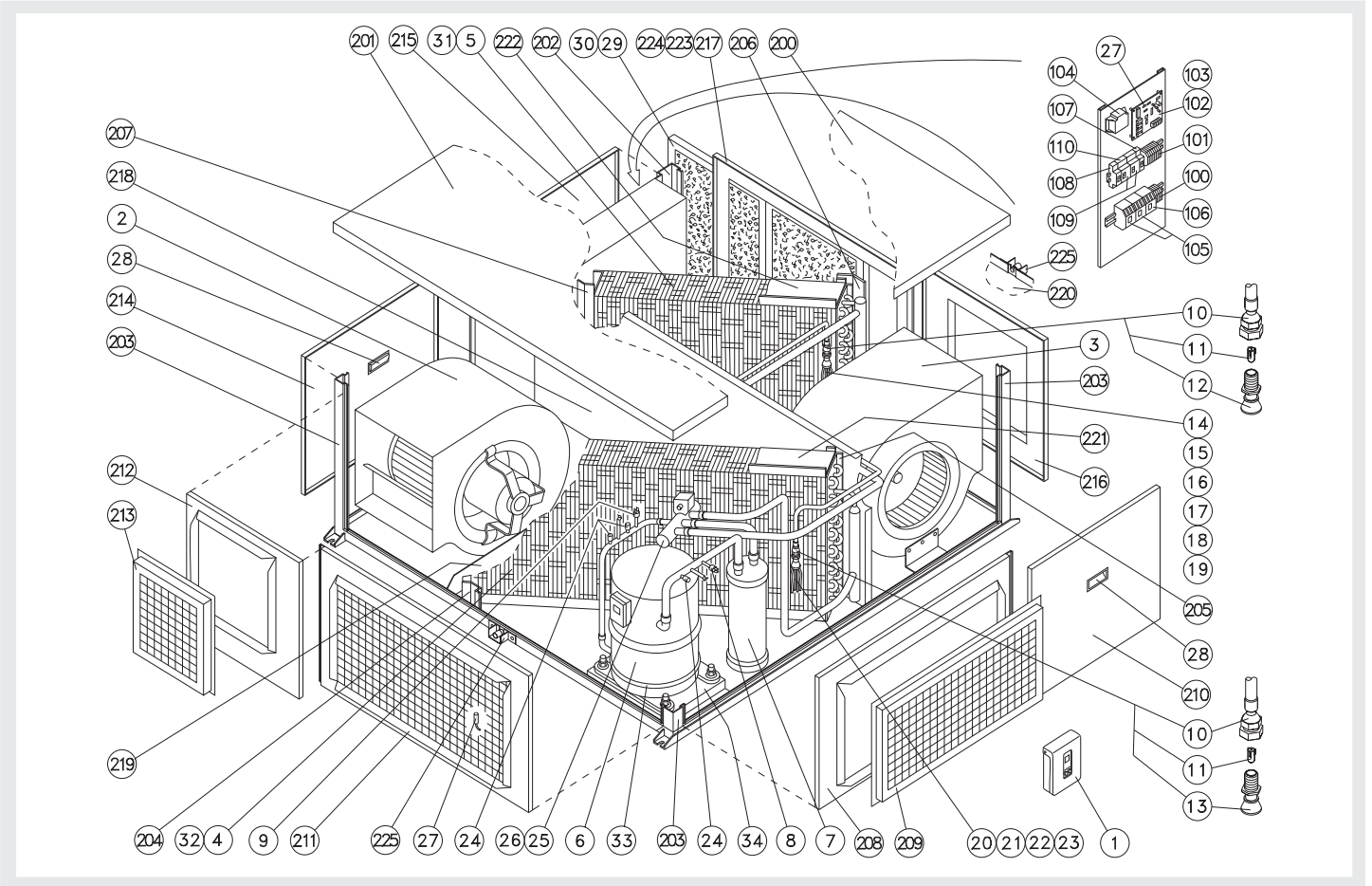


Spare Parts

RTH-20G-38 ed.01 (07-00)/ed.02 (01-01) R-407C (SERIAL B)



1/2



POS	ITEM	DENOMINATION	QUANTITY	
			RTH-20G-38 ed.01	RTH-20G-38 ed.02
1	3786046	Ambient thermostat	-	1
1	3786050	Ambient thermostat	1	-
2	3795048	Motor-driven fan	1	1
3	3795040	Motor-driven fan	1	1
4	61-7365	Outdoor coil	1	1
5	61-7366	Indoor coil	1	1
6	3721950	Compressor	1	1
7	1999567	Suction accumulator	1	1
8	025-30249-000	Low pressure switch	1	1
9	025-17620-025	High pressure switch	1	1
10	3532001	Aeroquip connector	2	2
11	3520020	Restrictor	-	2
11	3520017	Restrictor	2	-
12	3530006	Distributor	1	1
13	3530005	Distributor	1	1
14	86-9575	Indoor coil capillary tube n° 1	1	1
15	86-9576	Indoor coil capillary tube n° 2	1	1
16	86-9577	Indoor coil capillary tube n° 3	1	1
17	86-9578	Indoor coil capillary tube n° 4	1	1
18	86-9579	Indoor coil capillary tube n° 5	1	1
19	86-9580	Indoor coil capillary tube n° 6	1	1
20	86-9581	Outdoor coil capillary tube n° 1	1	1
21	86-9582	Outdoor coil capillary tube n° 2	1	1
22	86-9583	Outdoor coil capillary tube n° 3	1	1
23	86-9584	Outdoor coil capillary tube n° 4	1	1
24	3515630	Access connection	3	3
25	3794379	Four-way valve	1	1
26	6712524	Four-way valve trip coil	1	1
27	3785066	5000 mm Sensor	4	4
28	3787101	Handle for handling	3	3
29	3737705	Air filter 440 x 395 x 20	2	2
30	3750800	Filtering material	2	2
31	16-11486	Aluminium grid indoor coil	1	1
32	16-11487	Aluminium grid outdoor coil	1	1
33	6824905	Compressor crankcase heater	-	1
34	17-11762	Compressor support	1	-
100	3770994	Connecting strip	1	1

Spare Parts

RTH-20G-38 ed.01 (07-00)/ed.02 (01-01) R-407C (SERIAL B)



2/2

POS	ITEM	DENOMINATION	QUANTITY	
			RTH-20G-38 ed.01	RTH-20G-38 ed.02
101	3770996	Connecting strip	1	1
102	6791200	Electronic board	1	1
103	6826810	Nylon separator	4	4
104	6849855	Transformer	1	1
105	6744617	Contactora	2	2
106	6744639	Contactora	1	1
107	6776814	Automatic switch	2	1
108	6776852	Automatic switch	-	1
109	6776702	Main switch	-	2
110	6820403	Overload relay	2	
200	66-7221	Upper cover assembly	1	1
201	66-7222	Upper cover assembly	1	1
202	66-7212	Control box corner assembly	1	1
203	66-7211	Corner assembly	3	3
204	17-11119	Outdoor coil bracket	1	1
205	17-11818	Outdoor coil bracket	-	1
205	17-11118	Outdoor coil bracket	1	-
206	17-11116	Indoor coil bracket	1	1
207	17-11117	Indoor coil bracket	1	-
207	17-11817	Indoor coil bracket	-	1
208	66-7219	Outdoor coil panel assembly	1	1
209	66-7226	Outdoor coil grid cover assembly	1	1
210	66-7214	Fan panel assembly	1	1
211	66-7220	Outdoor coil panel assembly	1	1
212	66-7216	Fan panel assembly	1	1
213	17-10995	Outdoor fan grid	1	1
214	66-7215	Outdoor fan panel cover	1	1
215	66-7213	Control box panel	1	1
216	66-7217	Fan panel assembly	1	1
217	66-7218	Indoor coil panel assembly	1	1
218	66-7225A	Middle plate assembly	1	-
218	66-7225B	Middle plate assembly	-	1
219	63-7302	Outdoor drain pan	1	1
220	63-7301	Outdoor drain pan	1	1
221	17-11816	Outdoor coil front stop	-	1
222	17-11815	Outdoor coil front stop	-	1
223	17-11357	Upper filter guide	1	1
224	17-11358	Indoor filter guide	1	1
225	11-6905	Drainpipe protection	2	2