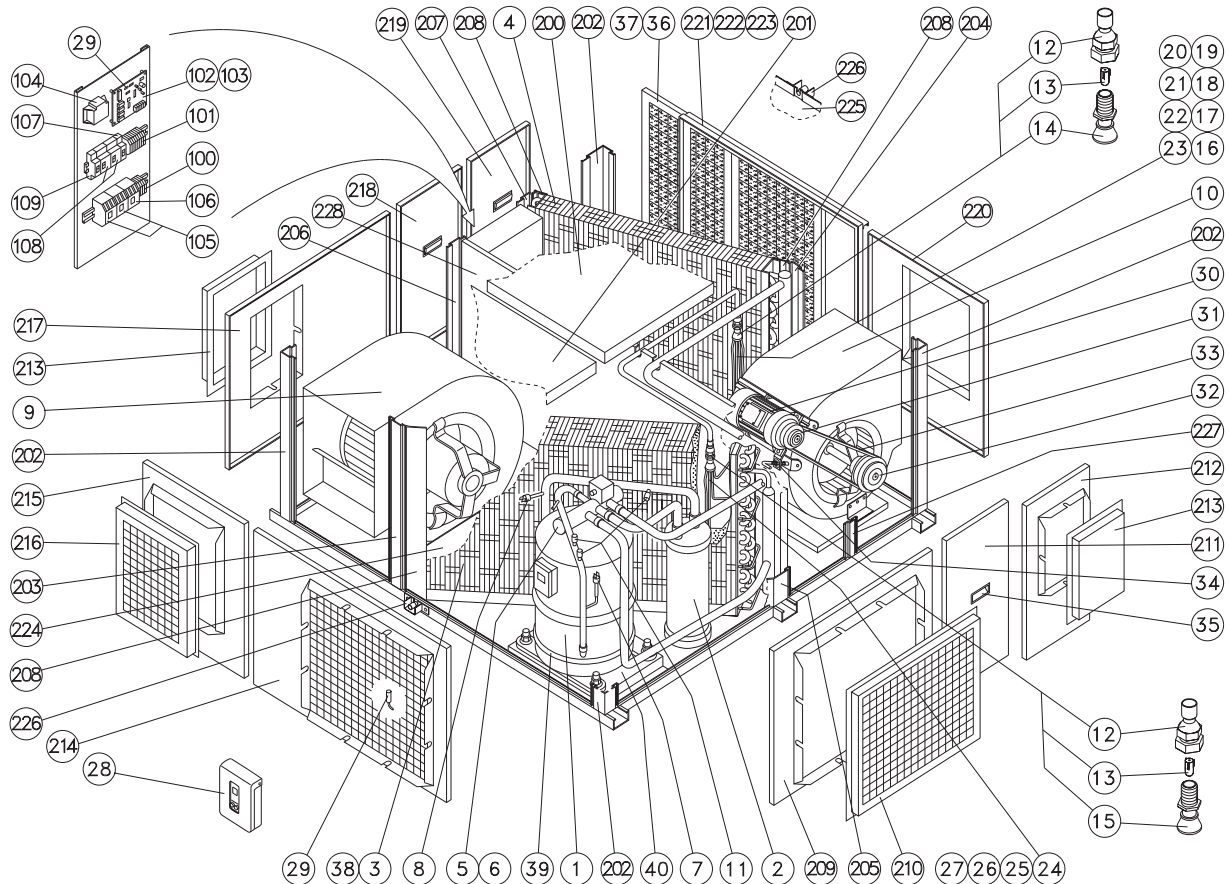


Spare Parts

RTH-25G-38 ed.01 (07-00)/ed.02 (02-01) R-407C (SERIAL B)



1/2



POS	ITEM	DENOMINATION	QUANTITY	
			RTH-25G-38 ed.01	RTH-25G-38 ed.02
1	3721951	Compressor	1	1
2	1999571	Suction accumulator	1	1
3	61-6892	Condenser coil	1	1
4	61-6890	Evaporator coil	1	1
5	3794379	Four-way valve	1	1
6	6712524	Four-way valve trip coil	1	1
7	025-17620-025	High pressure switch	1	1
8	025-30249-000	Low pressure switch	1	1
9	3795040	Motor-driven fan	1	1
10	3795031	Centrifugal fan	1	1
11	3515630	Access connection	3	3
12	3532001	Aeroquip connector	2	2
13	3520020	Restrictor	2	2
14	3530007	Distributor	1	1
15	3530005	Distributor	1	1
16	86-8862	Capillary tube n° 1	1	1
17	86-8863	Capillary tube n° 2	1	1
18	86-8864	Capillary tube n° 3	1	1
19	86-8865	Capillary tube n° 4	1	1
20	86-8866	Capillary tube n° 5	1	1
21	86-8867	Capillary tube n° 6	1	1
22	86-8868	Capillary tube n° 7	1	1
23	86-8869	Capillary tube n° 8	1	1
24	86-8870	Capillary tube n° 1	1	1
25	86-8871	Capillary tube n° 2	1	1
26	86-8872	Capillary tube n° 3	1	1
27	86-8873	Capillary tube n° 4	1	1
28	3786046	Ambient thermostat	-	1
28	3786050	Ambient thermostat	1	-
29	3785064	3500 mm Sensor	4	4
30	6792525	Fan motor	1	1
31	3761031	Speed varying pulley	1	1
32	3761076	Fan pulley	1	1
33	4918099	Fan belt	1	1
34	3778539	Fan top motor support	1	1
35	3787101	Handle for handling	3	3
36	3737736	Air filter 695 x 410 x 25	2	2

Spare Parts

RTH-25G-38 ed.01 (07-00)/ed.02 (02-01) R-407C (SERIAL B)



2/2

POS	ITEM	DENOMINATION	QUANTITY	
			RTH-25G-38 ed.01	RTH-25G-38 ed.02
37	3750800	Filtering material	2	2
38	16-11524	Aluminium grid outdoor coil	1	1
39	6824905	Compressor crankcase heater	-	1
40	17-11762	Compressor support	1	-
100	3770994	Connecting strip	1	1
101	3770996	Connecting strip	1	1
102	6791200	Electronic board	1	1
103	6826810	Nylon separator	4	4
104	6849855	Transformer	1	1
105	6744617	Contactora	2	2
106	6744652	Contactora	1	1
107	6776814	Automatic switch	1	1
108	6776702	Main switch	2	2
109	6776852	Automatic switch	-	1
200	66-6910	Upper cover assembly	1	1
201	66-6911	Upper cover assembly	1	1
202	66-6929	Comer assembly	4	4
203	66-6932	Fan post assembly and outdoor coil	1	1
204	66-6934	Indoor coil fan post assembly	1	1
205	66-7026	Middle post assembly and outdoor coil	1	1
206	66-7574	Control box post assembly	1	1
207	66-6933	Indoor coil control box post assembly	1	1
208	17-10287	Coil bracket	4	4
209	66-6923	Outdoor coil panel assembly	1	1
210	66-6936	Air intake cover assembly	1	1
211	66-6916	Indoor motor panel assembly	1	1
212	66-6914	Indoor fan panel cover	1	1
213	66-6938	Fan grid cover assembly	2	2
214	66-6922	Outdoor coil panel assembly	1	1
215	66-6921	Outdoor fan panel cover	1	1
216	17-10394	Outdoor air discharge panel	1	1
217	66-6920	Outdoor fan panel cover	1	1
218	66-6918	Control box panel	1	1
219	66-6919	Indoor coil panel assembly	1	1
220	66-6915	Indoor fan panel cover	1	1
221	62-6883	Filter frame panel assembly	1	1
222	17-10325	Upper filter guide	1	1
223	17-10326	Indoor filter guide	1	1
224	63-7724	Outdoor coil drain pan	-	1
224	63-6882	Outdoor coil drain pan	1	-
225	63-6881	Indoor coil drain pan	1	1
226	11-6905	Drainpipe protection	2	2
227	66-6930	Motor plate post assembly	1	1
228	66-7576	Middle plate assembly	1	1