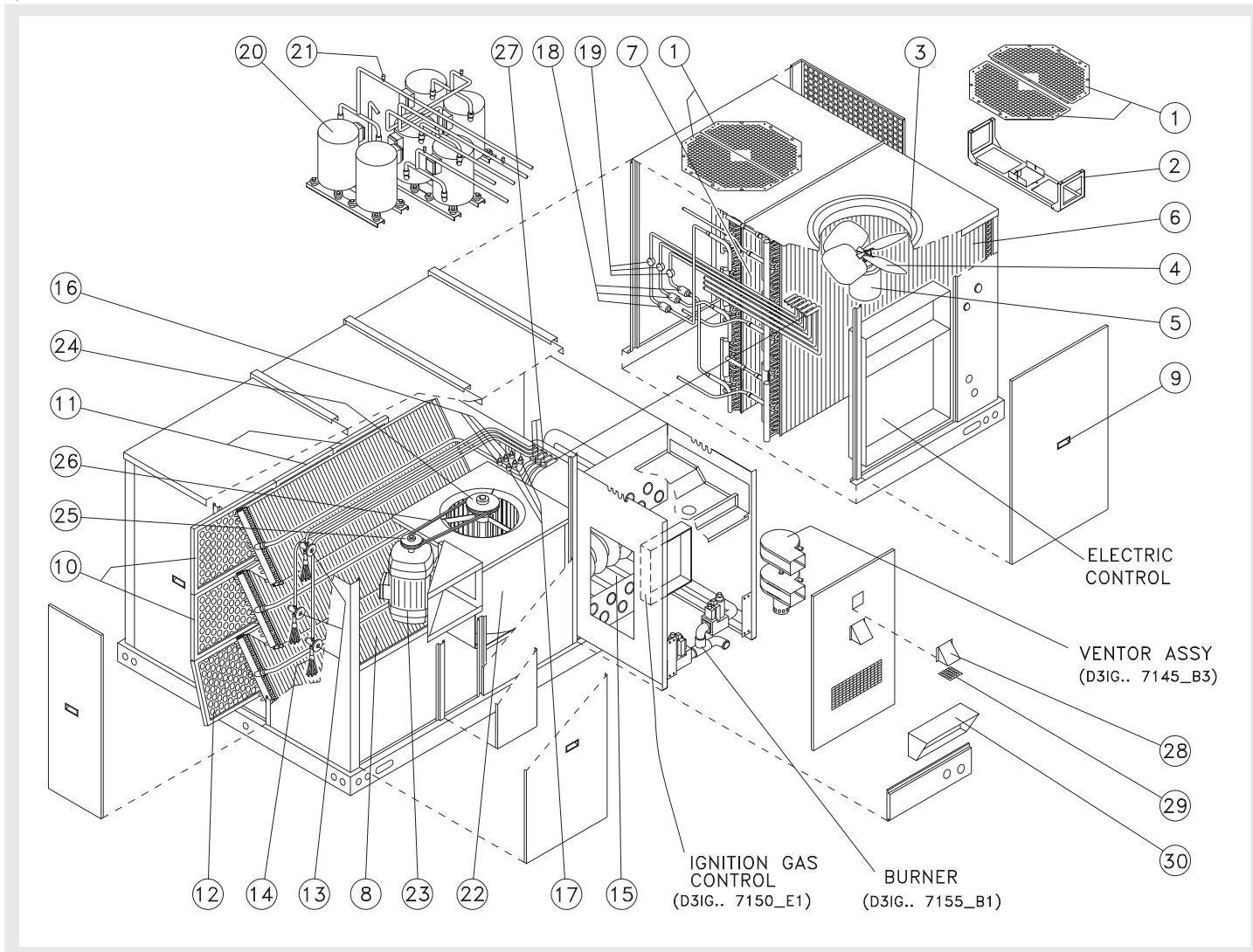


# Spare Parts ROOFTOP COOL+GAS HEAT. R-407C (Basic Unit) D3IG300G32050 ed.02 (07-01)



1/1



| POS | ITEM          | DENOMINATION  | QUANTITY                    |
|-----|---------------|---|-----------------------------|
|     |               |   | D3IG300G32050 ed.02 (07-01) |
| 1   | 16-10909      | Fan protection  | 4                           |
| 2   | 17-10175      | Condenser blower support                                  | 2                           |
| 3   | 3705099       | Orifice fan   | 2                           |
| 4   | 026-32577-000 | Fan propeller   | 2                           |
| 5   | 6792533       | Fan motor   | 2                           |
| 6   | 61-7761       | Right condenser coil                                      | 1                           |
| 7   | 61-7760       | Left condenser coil                                       | 1                           |
| 8   | 61-6790       | Evaporator coil   | 3                           |
| 9   | 3787101       | Handle for handling                                       | 5                           |
| 10  | 026-03616-000 | Air filter  | 2                           |
| 11  | 026-03617-000 | Air filter  | 4                           |
| 12  | 026-32606-000 | Air filter  | 3                           |
| 13  | 3794346       | Expansion valve (Check the valve adjustment in each case) | 3                           |
| 14  | 026-32699-000 | 5/8" Distributor assembly with 6 pipes                    | 3                           |
| 15  | 54-2669       | Exchanger   | 1                           |
| 16  | 025-17620-025 | High pressure switch                                      | 3                           |
| 17  | 025-30249-000 | Low pressure switch                                       | 3                           |
| 18  | 3737519       | Dryer filter  | 3                           |
| 19  | 3734760       | Liquid sight glass  | 3                           |
| 20  | 3721874       | Compressor  | 3                           |
| 21  | 3515630       | Access connection   | 6                           |
| 22  | 3795125       | Centrifugal fan   | 1                           |
| 23  | 6792527       | Fan motor   | 1                           |
| 24  | 35-0657       | Fan pulley  | 1                           |
| 25  | 35-0649       | Motor pulley  | 1                           |
| 26  | 4918088       | Fan belt  | 2                           |
| 27  | 025-30253-000 | Temperature control                                       | 3                           |
| 28  | 17-10267      | Ventor protection plate                                   | 2                           |
| 29  | 69-6441       | Ventor grid   | 2                           |
| 30  | 17-10417      | Fumace protection   | 1                           |